

### Sfpns 4

Flat wagon  
Wagon plats

Flachwagen  
Vagone pianale

#### Technical data

Length over buffers	23 740 mm
Loading length	22 340 mm
Loading width	2 470 mm
Platform height	1 365 mm
Height of side stanchions	1 700 mm
Height of head stanchions	1 700 mm
Height of head boards	400 mm
Height of bolsters	65 mm
Tare weight	26 200 kg
Payload (D - line)	63 500 kg
Minimum curve	50 m
Maximum speed	100 km/h

#### Technische Daten

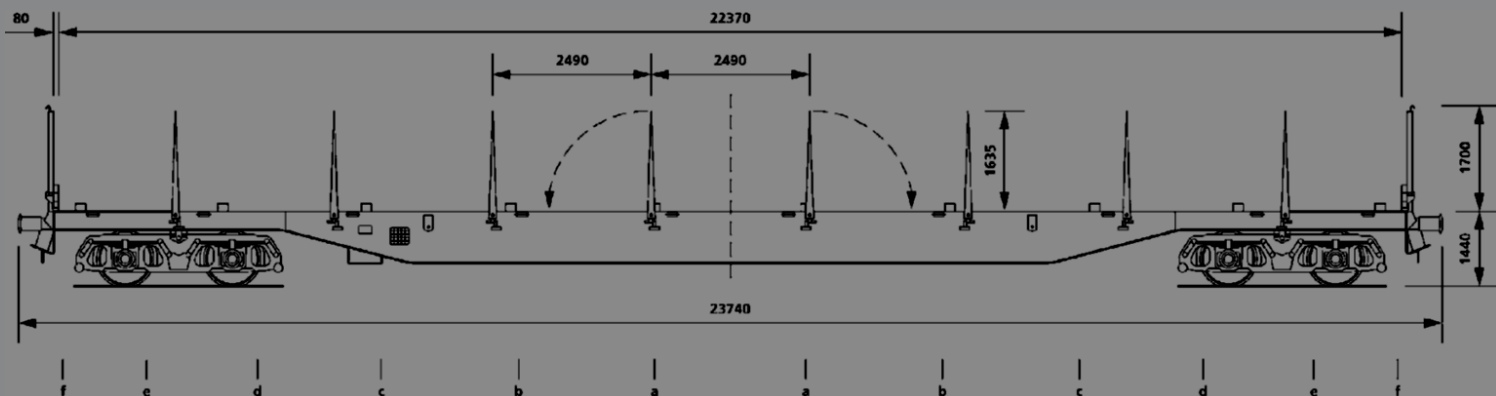
Länge über Puffer	23 740 mm
Ladelänge	22 340 mm
Ladebreite	2 470 mm
Fußbodenhöhe über Schienenoberkante	1 365 mm
Höhe der Seitenrungen	1 700 mm
Höhe der Stirnrungen	1 700 mm
Höhe der Stirnwand	400 mm
Höhe der Ladeschwellen	65 mm
Eigengewicht	26 200 kg
Lastgrenze (D - Linie)	63 500 kg
Min. befahrbarer Kurvenradius	50 m
Max. Geschwindigkeit	100 km/h

#### Données techniques

Longueur hors tout	23 740 mm
Longueur utile	22 340 mm
Largeur utile	2 470 mm
Hauteur du plancher	1 365 mm
Hauteur des ranchers latéraux	1 700 mm
Hauteur des ranchers de bout	1 700 mm
Hauteur des haussettes de bout	400 mm
Hauteurs des traverses d'appui	65 mm
Tare	26 200 kg
Limite de charge ( D - ligne)	63 500 kg
Rayon de courbure minimum	50 m
Vitesse maximum	100 km/h

#### Dati tecnici

Lunghezza sopra respingenti	23 740 mm
Lunghezza di carico	22 340 mm
Larghezza di carico	2 470 mm
Altezza della piattaforma	1 365 mm
Altezza montanti laterali	1 700 mm
Altezza montanti di testa	1 700 mm
Altezza delle tavole	400 mm
Altezza del rinforzo	65 mm
Tara	26 200 kg
Carico utile ( D - linea)	63 500 kg
Raggio min. di curvatura	50 m
Velocità massima	100 km/h



*This wagon is specially designed for longer loads and it is authorised only for SZ, GySEV, NSB, EWS, CD, ÖBB, SN, CB, CFL, JZ, SNCF, DSB, MAV, RAI, TCDD, FS, SBB, PKP, NS, MZ and ZSR.*

*Goods can be distributed evenly in this flat wagon.*

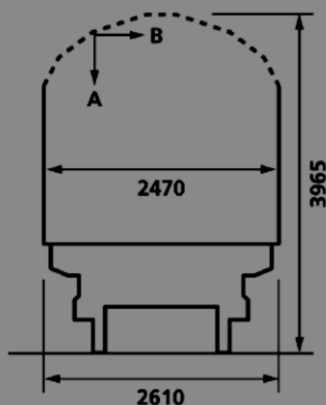
*The maximum wheel pressure on the floor board is 5 tonnes. Wagon is fitted with turnover bolsters.*

*The wagon has 8 collapsible stanchions per side. Those are each fitted with a hook for load security purpose. Winches are also fitted to enable tensioned strap security.*

*The head stanchions are removable and headboards can be deposited in specially fitted stanchion holds.*

*The headboards are collapsible and the wagon can be loaded/unloaded from head ramps.*

Height above rail (mm)	Related ½ width (mm)	Height above rail (mm)	Related ½ width (mm)	Height above rail (mm)	Related ½ width (mm)
3.080	1.410	3.380	1.274	3.680	891
3.090	1.407	3.390	1.265	3.690	877
3.100	1.404	3.400	1.256	3.700	864
3.110	1.401	3.410	1.247	3.710	850
3.120	1.398	3.420	1.238	3.720	836
3.130	1.395	3.430	1.229	3.730	822
3.140	1.392	3.440	1.220	3.740	809
3.150	1.389	3.450	1.206	3.750	795
3.160	1.386	3.460	1.193	3.760	765
3.170	1.383	3.470	1.179	3.770	735
3.180	1.380	3.480	1.165	3.780	705
3.190	1.378	3.490	1.151	3.790	675
3.200	1.375	3.500	1.138	3.800	646
3.210	1.372	3.510	1.124	3.810	616
3.220	1.369	3.520	1.110	3.820	586
3.230	1.366	3.530	1.097	3.830	556
3.240	1.363	3.540	1.083	3.840	526
3.250	1.360	3.550	1.069	3.850	496
3.260	1.357	3.560	1.055	3.860	466
3.270	1.354	3.570	1.042	3.870	436
3.280	1.351	3.580	1.028	3.880	407
3.290	1.348	3.590	1.014	3.890	377
3.300	1.345	3.600	1.001	3.900	347
3.310	1.336	3.610	987	3.910	317
3.320	1.327	3.620	973	3.920	287
3.330	1.318	3.630	960	3.930	257
3.340	1.309	3.640	946	3.940	227
3.350	1.300	3.650	932	3.950	197
3.360	1.291	3.660	918	3.960	167
3.370	1.283	3.670	905		



Distribution of load		
Loading Length	On floor	On bolsters
a-a 2.2m	23t	28t
b-b 6.5m	30t	38t
c-c 10.8m	33t	51t
d-d 15.0m	41t	54t
e-e 19.3m	51t	62.5t
f-f 22.4m	62.5t	45t
d-c 3m	31.5t	---

Payload	A	B	C	D	
S	37.5	45.5	55.5	63.5	**
120	0.00				